



Installation Notes

Complete active Sound incl. Soundbooster Volvo V60
v1.3 (02.01.2017)

Contents

1	Liability Exclusion	3
2	Copy Right	4
3	General Notes	4
4	Safety instructions	5
5	Requirements for the determinable operation	5
6	Note	5
7	Installation Overview	6
8	Removing the Glove Box	7
9	Installation Line Set	8
10	Positioning of the Sensing Device (Installation Proposal)	9
11	Setting Back of Line Set	10
12	Installation of the Outdoor Sound Booster	12
13	Important Information Sound Booster	13

1 Liability Exclusion

Dear Customer

Our cable sets are developed according to the connection- and circuit diagrams of the corresponding car manufacturer. Before the original production the cable sets will be tested on an original car. Therefore, the integration into the car electronics will be executed according to the instructions of the manufacturer. Regarding the necessary pre-understanding and the accuracy of the presentation of texts and pictures our mounting guidelines correspond to the usual ones in car technology and car electronics. Practically, they have been proved one's worth a hundred times.

However, should there be any difficulties during the installation of our products we will be at your disposal any time for support by phone or by mail. Moreover, we offer you to execute the installation at our works in Bad Segeberg.

Costs which may arise because a third person will execute the installation of our products will not be supported by us in any case. Only if there is a mistake caused by our product we will pay the proved costs of the installation as well as the costs of the removal of the defective product. The refund of expenses will be limited to gross EUR 110,- ; we reserve the right to check the described mistake in our works in Bad Segeberg. In case of a proved reclamation the costs for dispatch for the check in our factory will be transferred to you.

According to our experience each specific factory which has the necessary diagnostic device, diagnostic software and the circuit diagrams of the manufacturer can find possible mistakes at our products within a short time. So the installation and removal including diagnostic inspection can be realised in at most 60 minutes.

We also made the experience that many specific factories cannot work with the circuit diagrams of the manufacturer, and that they cannot read usual wiring diagrams. Therefore, very easy installation works will take many hours. You will understand that we neither take the risk to find a reliable specific factory nor the financing of the training of the staff of your favoured factory.

Costs which will arise because you buy missing parts or spare parts at other suppliers will be refunded by us up to the amount of the costs which had been arisen by additional supply (saved expenses). In this case, there would be no right for refund according to the legal guarantee right as long as we have no deadline for supplementary performance or a deadline for supplementary performance has not expired.

So if you have any problems with the installation or operation of one of our products please call us, send us an email, send us the product or take your car to our factory in Bad Segeberg. We are sure to find an appropriate solution for each concern.

With best regards

Your Kufatec GmbH & Co. KG Team

2 Copy Right

Our installation- and removal instructions, installation plans, software and other documentation with texts or pictures are protected by copy right.

A publication or distribution of these documents is only permitted with a written approval of Kufatec GmbH & Co. KG.

3 General Notes

Regarding the development there has especially been paid attention to your personal safety together with the most possible operating comfort, modern design and actual product technologies.

Despite most possible accuracy in case of incorrect installation or use or in case of incorrect operating, it is possible that injuries or damages of property may arise.

Therefore, please read the operating instructions you have received carefully and completely, and keep it with you.

All articles of our production will be checked at 100% — for your safety.

We reserve the right to make technical changes which serve the progress at any time.

Before the installation or startup it may be necessary, depending on the article and purpose of use, to check the legal instructions of each country.

In case of warranty claim the device has to be sent to the seller originally packed together with the sales receipt and a detailed description of the mistake. Please consider the manufacturer's instructions for return (RMA). The legal warranty instructions are valid.

The warranty claim and also the permission for startup will expire in case of:

- unauthorised changes on the device or the accessories which have not been executed or approved by the manufacturer or its partners
- opening of the box
- repair of the device on your own
- incorrect use / no normal use / startup
- influence of force on the device (falling down, wilful damage, accident, etc.)

During the installation please consider all safety and legal instructions. The device may only be installed by trained qualified personnel or persons who are similar qualified.

In case of installation- or function problems please reduce the search of the mistake to approx. 0,5 hours for mechanical works or 1,0 hours for electronic works.

To avoid unnecessary additional work and expenses, please send immediately an inquiry to our technical support with the Kufatec contact form (<http://www.kufatec.de/shop/de/infocenter/>)

Please absolutely mention the following:

- car chassis number
- part number of the add-on kit
- exact description of the problem
- work steps already made

4 Safety instructions

The installation may only be executed by trained qualified personnel. Please execute the installations only in a condition of dead voltage. Here please separate for example the battery from the main power supply and consider the instructions of the car manufacturer.

- In order to not endanger your own driving safety please never use security relevant screws, bolts or other fixation pieces at steering, brake system or other components.
- Connect the device only at 12V wiring system voltage with ground connection to the autobody. This assembly is not allowed for the use in trucks or other cars with 24V wiring system voltage.
- Please avoid the installation of the device at positions where the driving safety or the functional efficiency of other subassembly integrated in the car are restricted.
- This module may only be used together with the following mentioned car types and models; the installation may be executed exclusively by use of the circuit points mentioned in the assembly instructions.
- Kufatec GmbH & Co. KG does not assume liability for damages which are caused by incorrect installation, the use of inapplicable circuit points or the installation into car types and -modules which are not foreseen.
- We would like to draw your attention to the fact that the module processes the data of the MOST-protocol of the car mentioned below. Therefore, during the installation of the module it will be used a model-specific complete system which we as the manufacturer of the mentioned construction line only know partly.
- Especially in case of changes within the same model line and the same year we therefore cannot guarantee the applicability of our construction line in each case. Kufatec GmbH & Co. KG does not assume liability for the applicability of our construction line with changes made by the manufacturer.
- Kufatec GmbH & Co. KG does not assume liability that the installation of the here described component has been permitted according to the guarantee instructions of particular car manufacturers. Therefore, please consider the guidelines for installation and guarantee conditions of your car manufacturer before installation.
- The manufacturer reserves the right to change components without giving reasons.
- Subject to errors and changes

5 Requirements for the determinable operation

Please use the device only in its the corresponding area.

In case of unprofessional and untypical use, installation or modification the permission for operation and the warranty claim will expire.

6 Note

Make sure that there's enough space at the described position. If there is no space please cancel the installation and contact our technical support.

7 Installation Overview

The following presentation shows the Laying of the Cables as well as the position of single components.

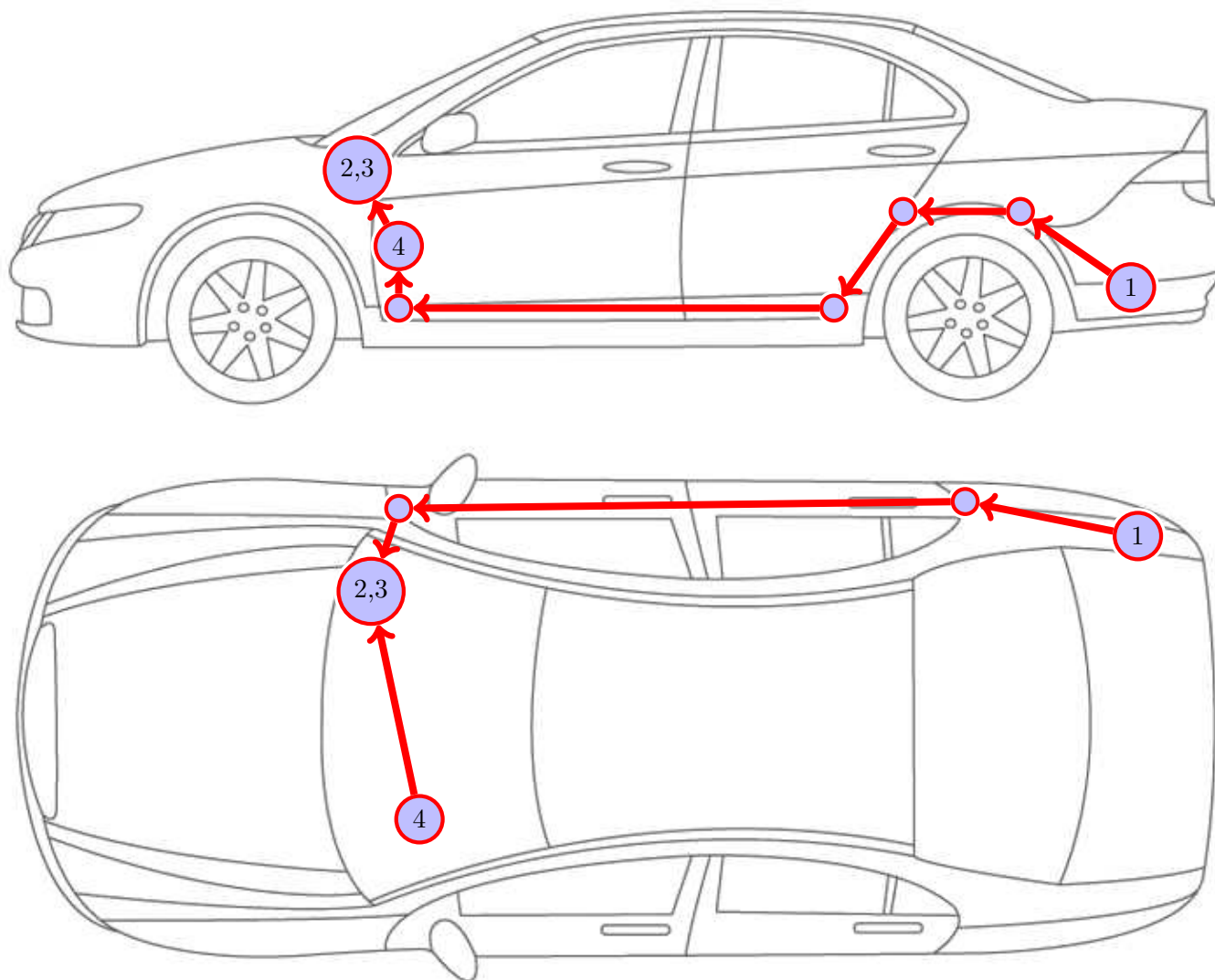


Figure 1: Car Overview

- 1 External Sound Booster incl. Holder
- 2 Control Unit for Motor Sound Booster
- 3 Sound Booster Pro (Module)
- 4 Sensing Device

8 Removing the Glove Box

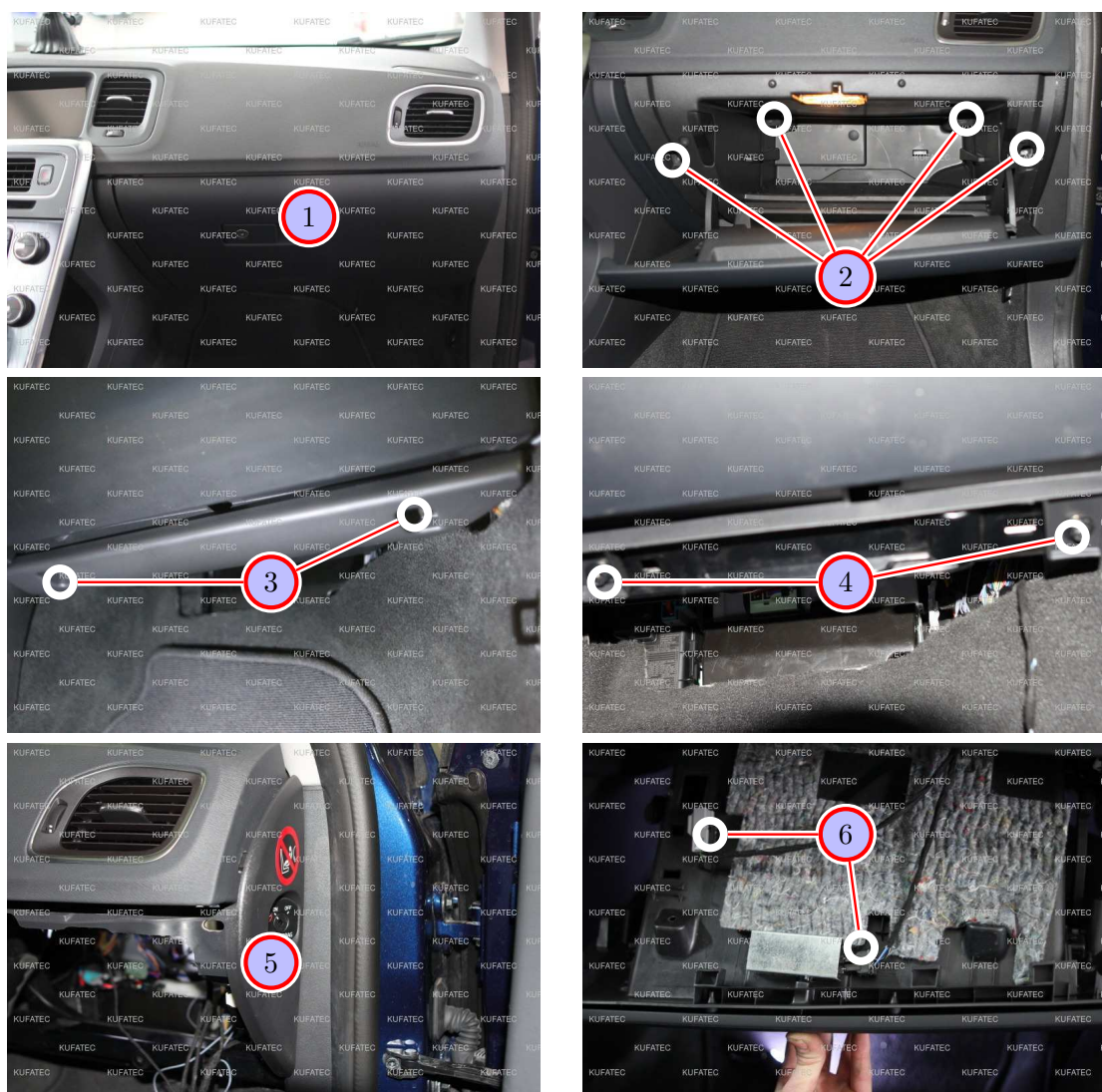


Figure 2: Pictures for Removing the Glove Box

Table 1: Instructions for Removing the Glove Box

Nr.	Procedure	Note
1	Open the Glove Box	
2	Release the represented screws	
3	Release the represented screws and remove the lower covering	
4	Release the represented screws	
5	Pull out the lateral covering and put, if it exists, the plug connection for the disconnection of the Airbag.	
6	Now pull out the glove box a little and disconnect the represented plug connections. After that the glove box can be completely removed.	

9 Installation Line Set

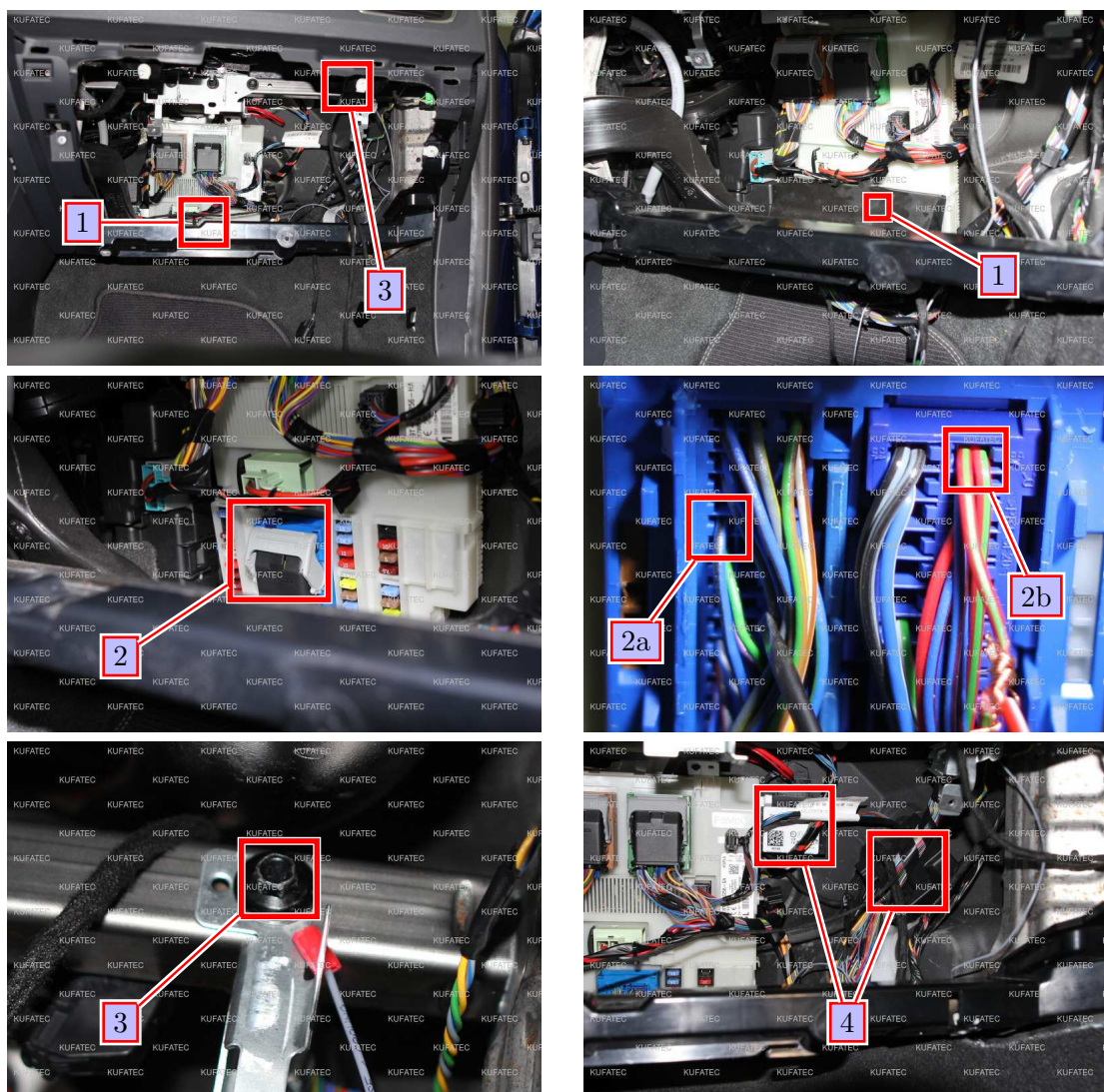


Figure 3: Pictures Installation Line Set

Table 2: Instructions for Installation Line Set

Nr.	Procedure	Note
1	Remove the black covering.	
2	Loosen the locking of the blue plug and connect CAN High & low as well as ignition plus as followed:	
2a	CAN High at PIN 6 (Cable color at plug: blue/black)	
	CAN Low at PIN 7 (Cable color at plug: green/black)	
2b	Connect the Ignition Cable (Cable color red/white) at PIN 99 (Cable color at plug: red/green)	
3	Release the pictured screws and after that install the mass cable at this position.	
4	Connect the Sound Booster Pro Modul and the Control Unit for the Motor Sound Generation with the Cable Set and stow it at the indicated positions.	

10 Positioning of the Sensing Device (Installation Proposal)

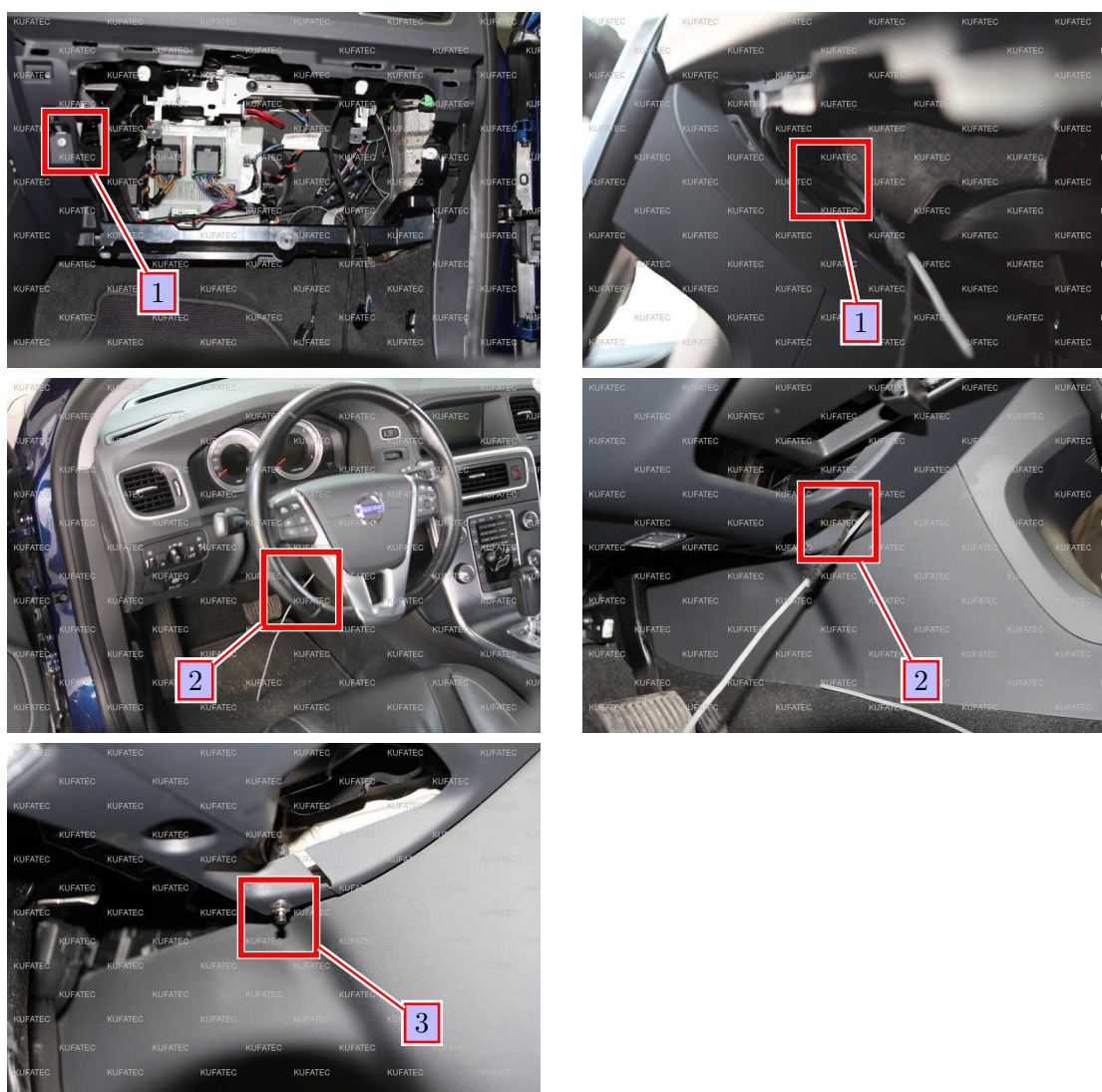


Figure 4: Pictures Installation of the Sensing Device

Table 3: Instructions for Installation of the Sensing Device

Nr.	Procedure	Note
1	Please fix the Sensing Device Cable at a corresponding pull-through assistance and lead the cable behind the center console up to the foot space of the driver's side.	
2	Below the steering wheel is located an aperture from which you can pull out the pull-through assistance. Please pull out the sensing device cable as far as possible and remove the pull-through assistance.	
3	Drill a hole for the Sensing Device at the indicated position. After that please fix the switch	7mm drill

11 Setting Back of Line Set

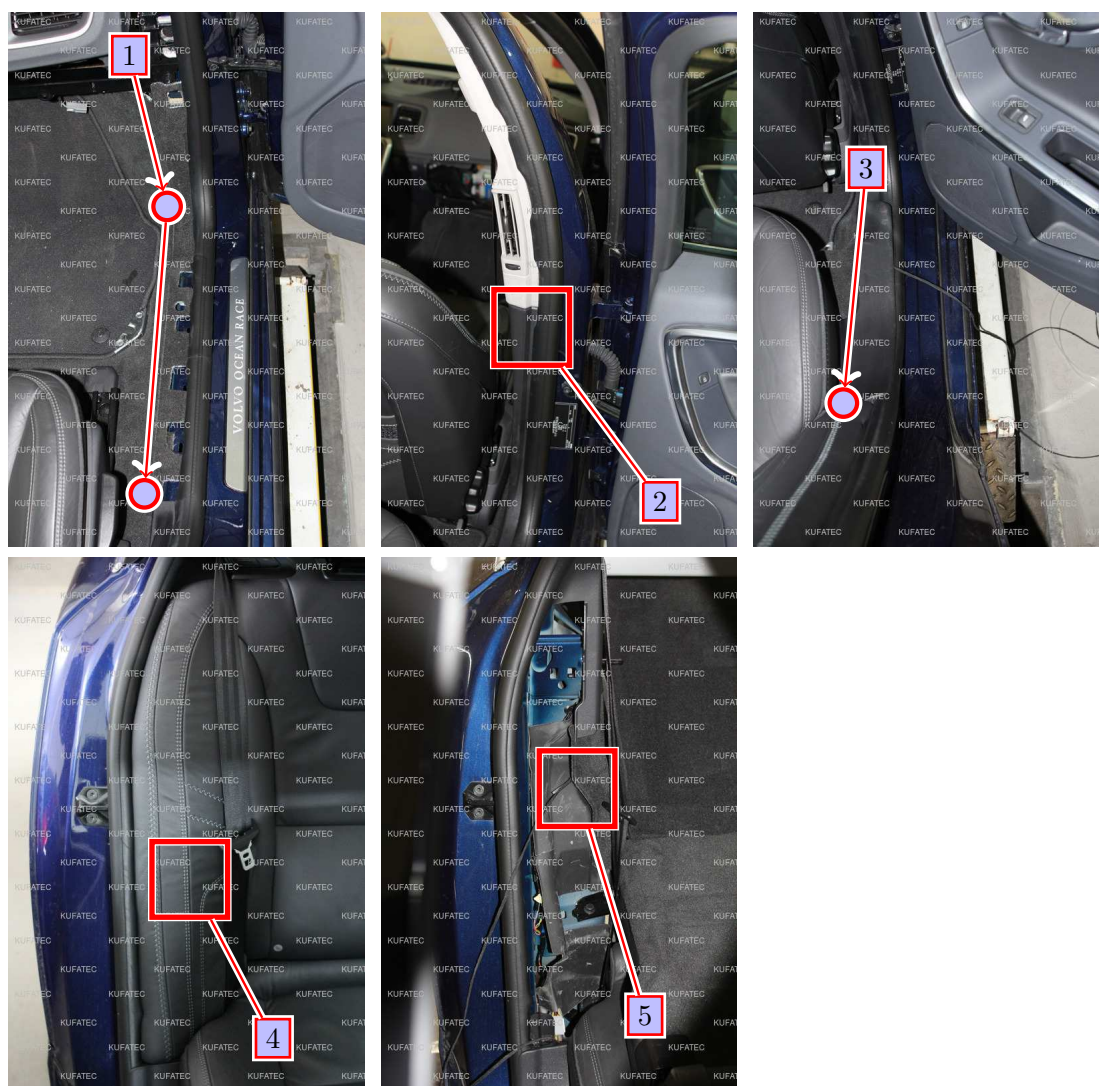


Figure 5: Pictures of Setting Back the Line Set

Table 4: Instructions for Setting Back the Line Set

Nr.	Procedure	Note
1	Remove the entering guide rail on the co-driver's side in front and pull the cable for the outdoor sound booster with a pull-through assistance below the carpet up to the B-column covering.	
2	Release the B-column covering with a plastic installation lever.	
3	Release with a plastic installatin lever the entering guide rail on the co-driver's side in the back. Pull the cable with the pull-through assistance from the front behind the B-column covering and under the just released entering guide rail in the back up to the stuffing of the back seats.	
4	Please clap the back seats on the co-driver's side in the back to the front. After that you can remove the stuffing of the side covering in the back.	
5	The cable now can now be pushed through with the pull-through assitance above the wheel case - direction luggage space.	

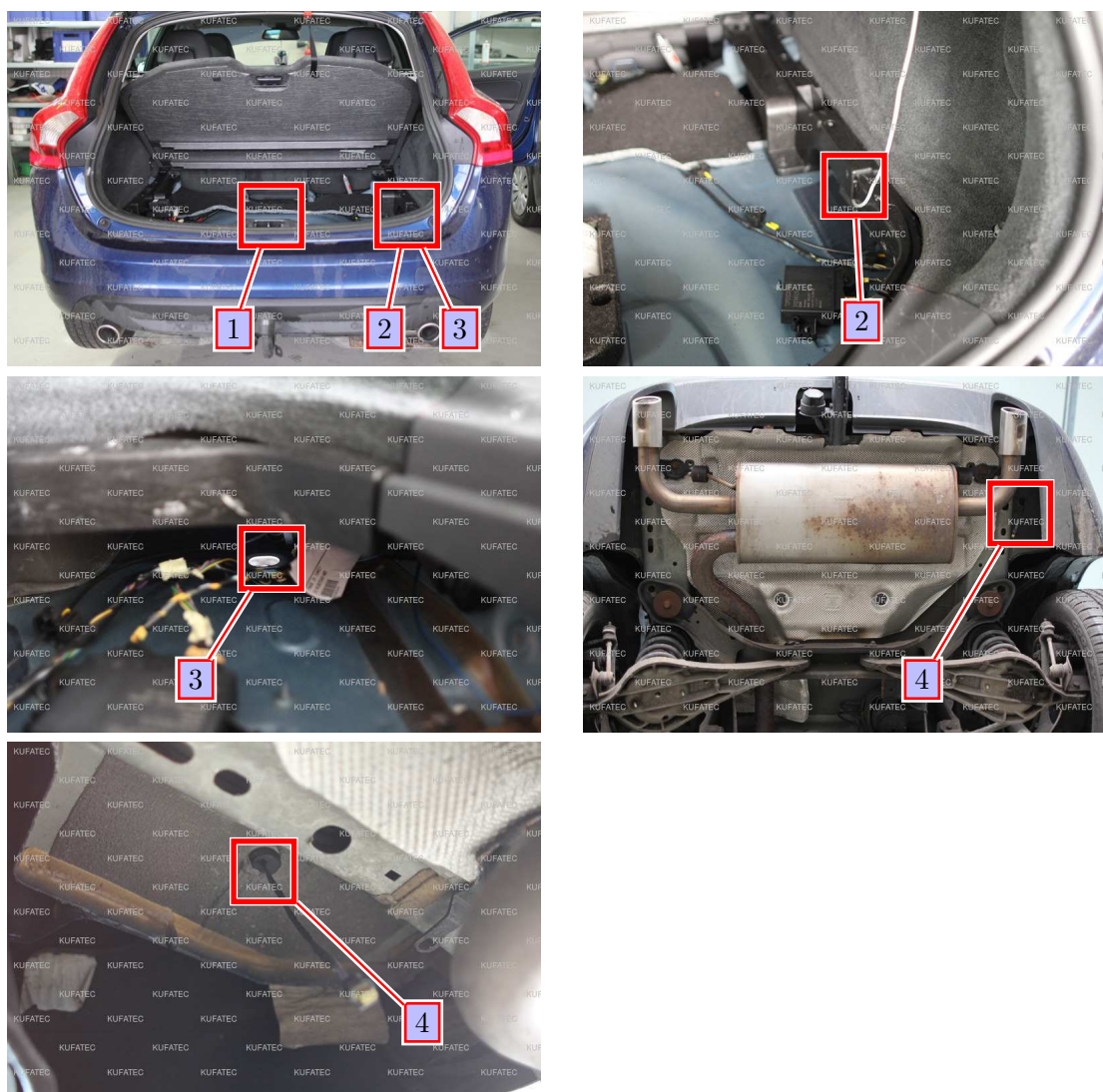


Figure 6: Pictures Setting Back of Line Set

Table 5: Instructions for Setting Back of Line Set into the Luggage Space

Nr.	Procedure	Note
1	Please open the cover of the luggage space.	
2	The cable for the outdoor sound booster has now to be pulled with the pull-through assistace to the back into the luggage space.	
3	Lead the cable through the body aperture outside.	
4	Close the body aperture with a special rubber seal with an opening for the cable.	

12 Installation of the Outdoor Sound Booster

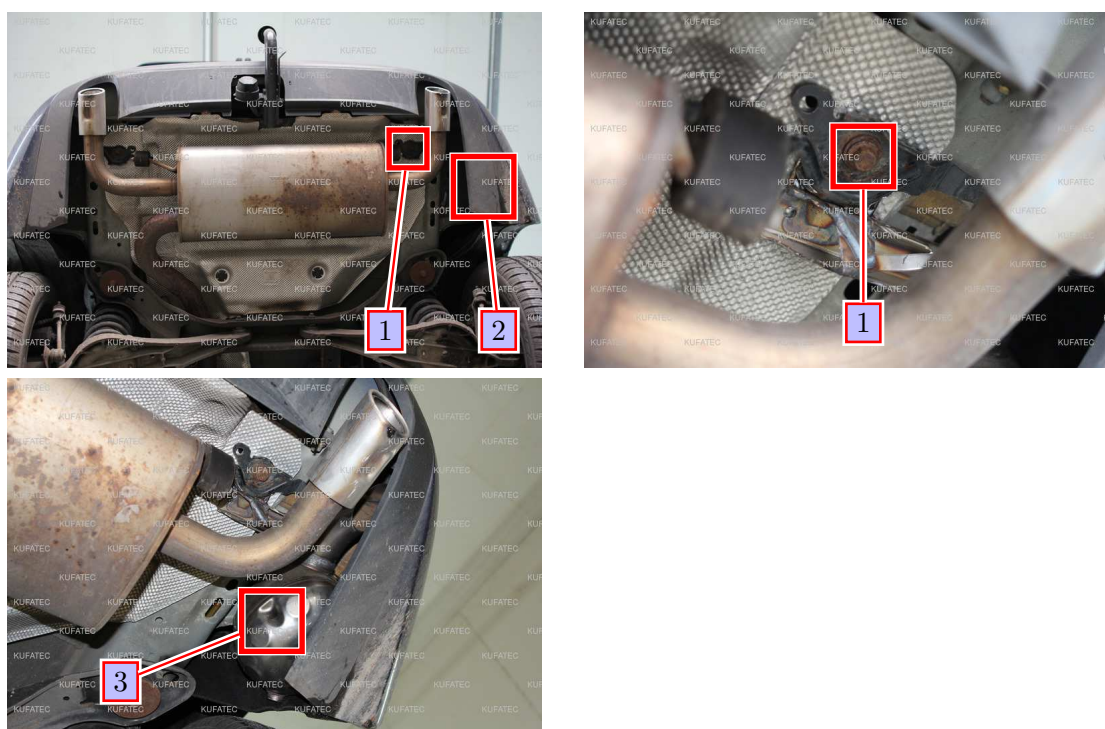


Figure 7: Pictures Connection of the Sound Booster

Table 6: Instructions for the Installation of the Sound Booster

Nr.	Procedure	Note
1	Release the indicated screw for the exhaust bracket.	
2	Place the Outdoor Sound Booster at the indicated position and push the holder from the Sound Booster under the black exhaust bracket. After that please fix both again with the just release screw.	
3	At the end please connect the Sound Booster with the cable led outside.	

13 Important Information Sound Booster

Please use for the fixation of the Sound Booster suitable high tensile screws. In order to avoid loosening of the screws by vibration please make the screws safe with appropriate factory material e.g. Threadlock. Please additionally check the stability of the Sound Booster regularly and if necessary retighten the screws. In case of no consideration we do not assume liability for possible damages.

As additional safety the delivered steel cable and the retaining clips have to be tightened on the Sound Booster as well as at a suitable position in the car. This safety cable is an additional security should the tightening screws should be released by vibration.

List of Figures

1	Car Overview	6
2	Pictures for Removing the Glove Box	7
3	Pictures Installation Line Set	8
4	Pictures Installation of the Sensing Device	9
5	Pictures of Setting Back the Line Set	10
6	Pictures Setting Back of Line Set	11
7	Pictures Connection of the Sound Booster	12

List of Tables

1	Instructions for Removing the Glove Box	7
2	Instructions for Installation Line Set	8
3	Instructions for Installation of the Sensing Device	9
4	Instructions for Setting Back the Line Set	10
5	Instructions for Setting Back of Line Set into the Luggage Space	11
6	Instructions for the Installation of the Sound Booster	12